

Report of Test

LLIA000824-040A

Catalog Number: 3-618-24B Oracle Ceiling Mount
Ceiling mounted, formed steel housing with white enamel steel reflector,
translucent white plastic enclosure with decorative trim.
24 white LEDs, One Harvard Engineering LEDENG-165-930 LED board
One L.T.F. DA12W350C1834D010-0014 dimmable LED driver
120.0Vac, 60.00Hz, 0.0902A, 10.41W, 0.962PF, 9.7%THD(i)



Performance Summary

| | |
|--------------------|-----------|
| Total Light Output | 773 lm |
| Luminaire Power | 10.4 W |
| Luminous Efficacy | 74.3 lm/W |

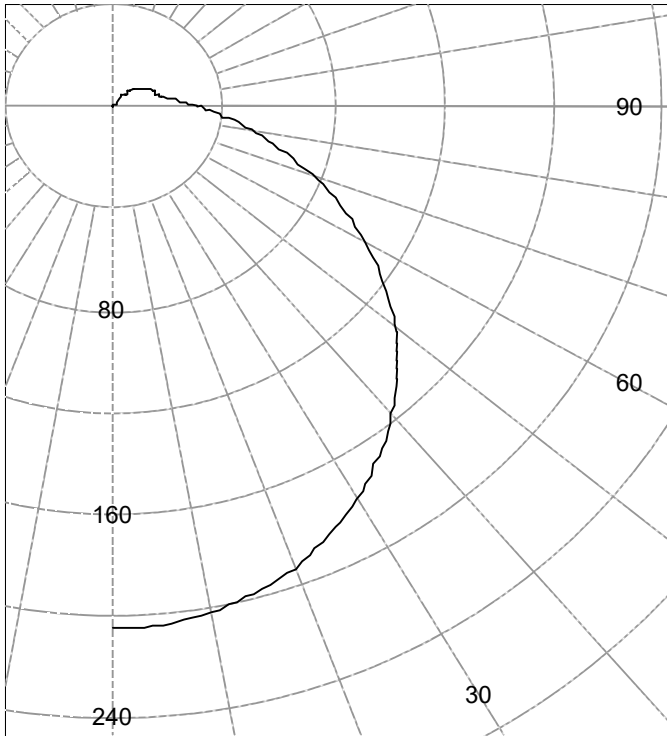
PREPARED FOR : Oxygen Lighting, 201 Railhead Road, Fort Worth, TX 76106, USA



Test Report No. LLIA000824-040A

Catalog Number: 3-618-24B Oracle Ceiling Mount
Ceiling mounted, formed steel housing with white enamel steel reflector,
translucent white plastic enclosure with decorative trim.
24 white LEDs, One Harvard Engineering LEDENG-165-930 LED board
One L.T.F. DA12W350C1834D010-0014 dimmable LED driver
120.0Vac, 60.00Hz, 0.0902A, 10.41W, 0.962PF, 9.7%THD(i)

Legend: All planes - Solid (cd)



(Rotational symmetry)

AVERAGE LUMINANCE (cd / m²)

| Gamma | C0 |
|-------|------|
| 45.0 | 3426 |
| 55.0 | 3053 |
| 65.0 | 2625 |
| 75.0 | 2158 |
| 85.0 | 1777 |

INTENSITY SUMMARY (cd)

| Gamma | All Planes | Flux (lm) | Gamma | C0 | Flux (lm) |
|-------|------------|-----------|-------|----|-----------|
| 0 | 205 | | 90 | 32 | |
| 5 | 204 | 19 | 95 | 25 | 28 |
| 10 | 202 | | 100 | 20 | |
| 15 | 198 | 56 | 105 | 18 | 19 |
| 20 | 193 | | 110 | 16 | |
| 25 | 186 | 86 | 115 | 16 | 15 |
| 30 | 177 | | 120 | 14 | |
| 35 | 168 | 105 | 125 | 13 | 12 |
| 40 | 157 | | 130 | 12 | |
| 45 | 146 | 113 | 135 | 10 | 8 |
| 50 | 133 | | 140 | 8 | |
| 55 | 120 | 107 | 145 | 6 | 4 |
| 60 | 105 | | 150 | 4 | |
| 65 | 91 | 90 | 155 | 3 | 1 |
| 70 | 76 | | 160 | 2 | |
| 75 | 63 | 66 | 165 | 1 | 0 |
| 80 | 50 | | 170 | 1 | |
| 85 | 40 | 44 | 175 | 0 | 0 |
| 90 | 32 | | 180 | 0 | |

ZONAL FLUX AND PERCENTAGES

| Zone | Flux (lm) | %Lamp | %Luminaire |
|--------|-----------|-------|------------|
| 0-30 | 161 | N / A | 20.8 |
| 0-40 | 266 | N / A | 34.4 |
| 0-60 | 486 | N / A | 62.8 |
| 0-90 | 686 | N / A | 88.7 |
| 40-90 | 420 | N / A | 54.3 |
| 60-90 | 200 | N / A | 25.9 |
| 90-180 | 87 | N / A | 11.3 |
| 0-180 | 773 | N / A | 100.0 |

Total Light Output = 773 lm

Spacing Criterion: 0-180 1.3
Spacing Criterion: 90-270 1.3

Signed:

Authorized Signatory

Date of test 2-Aug-2017
Date of report 3-Aug-2017



Test Report No. LLIA000824-040A

Catalog Number: 3-618-24B Oracle Ceiling Mount
Ceiling mounted, formed steel housing with white enamel steel reflector,
translucent white plastic enclosure with decorative trim.
24 white LEDs, One Harvard Engineering LEDENG-165-930 LED board
One L.T.F. DA12W350C1834D010-0014 dimmable LED driver
120.0Vac, 60.00Hz, 0.0902A, 10.41W, 0.962PF, 9.7%THD(i)

Intensity (cd) and Flux (lm) data

| Gamma | Intensity | Flux | Gamma | Intensity | Flux |
|-------|-----------|------|-------|-----------|------|
| 0.0 | 205 | | 90.0 | 32 | |
| 2.5 | 205 | | 92.5 | 28 | |
| 5.0 | 204 | 19 | 95.0 | 25 | |
| 7.5 | 203 | | 97.5 | 22 | 28 |
| 10.0 | 202 | | 100.0 | 20 | |
| 12.5 | 200 | | 102.5 | 19 | |
| 15.0 | 198 | 56 | 105.0 | 18 | |
| 17.5 | 195 | | 107.5 | 17 | 19 |
| 20.0 | 193 | | 110.0 | 16 | |
| 22.5 | 189 | | 112.5 | 16 | |
| 25.0 | 186 | 86 | 115.0 | 16 | |
| 27.5 | 182 | | 117.5 | 15 | 15 |
| 30.0 | 177 | | 120.0 | 14 | |
| 32.5 | 173 | | 122.5 | 14 | |
| 35.0 | 168 | 105 | 125.0 | 13 | |
| 37.5 | 163 | | 127.5 | 12 | 12 |
| 40.0 | 157 | | 130.0 | 12 | |
| 42.5 | 152 | | 132.5 | 11 | |
| 45.0 | 146 | 113 | 135.0 | 10 | |
| 47.5 | 140 | | 137.5 | 9 | 8 |
| 50.0 | 133 | | 140.0 | 8 | |
| 52.5 | 127 | | 142.5 | 7 | |
| 55.0 | 120 | 107 | 145.0 | 6 | |
| 57.5 | 113 | | 147.5 | 5 | 4 |
| 60.0 | 105 | | 150.0 | 4 | |
| 62.5 | 98 | | 152.5 | 4 | |
| 65.0 | 91 | 90 | 155.0 | 3 | |
| 67.5 | 84 | | 157.5 | 2 | 1 |
| 70.0 | 76 | | 160.0 | 2 | |
| 72.5 | 69 | | 162.5 | 2 | |
| 75.0 | 63 | 66 | 165.0 | 1 | |
| 77.5 | 56 | | 167.5 | 1 | 0 |
| 80.0 | 50 | | 170.0 | 1 | |
| 82.5 | 45 | | 172.5 | 1 | |
| 85.0 | 40 | 44 | 175.0 | 0 | |
| 87.5 | 36 | | 177.5 | 0 | 0 |
| 90.0 | 32 | | 180.0 | 0 | |



Test Number: LLIA000824-040A

Catalog Number: 3-618-24B Oracle Ceiling Mount

Ceiling mounted, formed steel housing with white enamel steel reflector,
translucent white plastic enclosure with decorative trim.

24 white LEDs, One Harvard Engineering LEDENG-165-930 LED board

One L.T.F. DA12W350C1834D010-0014 dimmable LED driver

120.0Vac, 60.00Hz, 0.0902A, 10.41W, 0.962PF, 9.7%THD(i)

Coefficients Of Utilization - Zonal Cavity Method

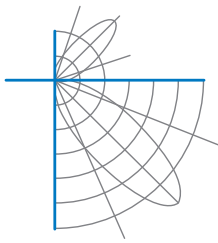
Effective Floor Cavity Reflectance 0.20

| RC | 80 | | | | 70 | | | | 50 | | | 30 | | | 10 | | | 0 |
|----|-----|-----|-----|-----|-----|-----|-----|-----|-----|-----|-----|----|----|----|----|----|----|----|
| | RW | 70 | 50 | 30 | 10 | 70 | 50 | 30 | 10 | 50 | 30 | 10 | 50 | 30 | 10 | 50 | 30 | |
| 0 | 116 | 116 | 116 | 116 | 112 | 112 | 112 | 112 | 105 | 105 | 105 | 98 | 98 | 98 | 92 | 92 | 92 | 89 |
| 1 | 104 | 99 | 94 | 89 | 100 | 95 | 91 | 86 | 89 | 85 | 82 | 83 | 80 | 77 | 77 | 75 | 73 | 70 |
| 2 | 94 | 85 | 77 | 71 | 90 | 82 | 75 | 69 | 76 | 71 | 66 | 71 | 67 | 63 | 67 | 63 | 60 | 57 |
| 3 | 85 | 74 | 65 | 58 | 82 | 71 | 63 | 57 | 67 | 60 | 54 | 62 | 57 | 52 | 58 | 54 | 50 | 47 |
| 4 | 78 | 65 | 56 | 49 | 74 | 63 | 54 | 48 | 59 | 52 | 46 | 55 | 49 | 44 | 52 | 47 | 42 | 40 |
| 5 | 71 | 58 | 49 | 42 | 68 | 56 | 47 | 41 | 53 | 45 | 39 | 49 | 43 | 38 | 46 | 41 | 36 | 34 |
| 6 | 66 | 52 | 43 | 36 | 63 | 50 | 42 | 35 | 47 | 40 | 34 | 45 | 38 | 33 | 42 | 36 | 32 | 30 |
| 7 | 61 | 47 | 38 | 32 | 58 | 46 | 37 | 31 | 43 | 36 | 30 | 41 | 34 | 29 | 38 | 33 | 28 | 26 |
| 8 | 57 | 43 | 34 | 28 | 54 | 42 | 33 | 28 | 39 | 32 | 27 | 37 | 31 | 26 | 35 | 29 | 25 | 23 |
| 9 | 53 | 39 | 31 | 25 | 51 | 38 | 30 | 25 | 36 | 29 | 24 | 34 | 28 | 23 | 32 | 27 | 23 | 21 |
| 10 | 49 | 36 | 28 | 23 | 48 | 35 | 27 | 22 | 33 | 26 | 22 | 32 | 25 | 21 | 30 | 25 | 20 | 19 |

For absolute test reports, CUs are expressed as a percentage of total lumen output. Calculations were based on published IES procedures, and are based on the zonal cavity method. Basic assumptions: 1) Room surfaces are lambertian reflectors. 2) Incident flux on each surface is uniformly distributed. 3) The room is spectrally neutral. When luminaires are not evenly distributed throughout the room, or do not exhibit lateral symmetry, CU values may differ from actual performance.

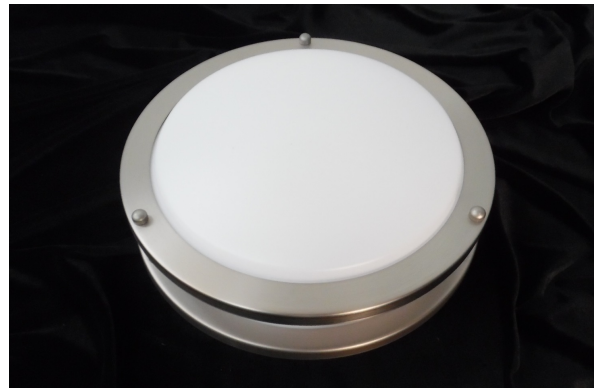
Circle of Light Plot

| Height(ft) | Illuminance at Nadir (fc) | Beam Width (across 50% Nadir Illum) | |
|------------|---------------------------|--|--------|
| | | 0-180 | 90-270 |
| 6.0 | 5.7 | 7.72 | 7.72 |
| 8.0 | 3.2 | 10.29 | 10.29 |
| 10.0 | 2.1 | 12.87 | 12.87 |
| 12.0 | 1.4 | 15.44 | 15.44 |
| 14.0 | 1.0 | 18.01 | 18.01 |
| 16.0 | 0.8 | 20.59 | 20.59 |



Test Report No. LLIA000824-040A

Catalog Number: 3-618-24B Oracle Ceiling Mount
Ceiling mounted, formed steel housing with white enamel steel reflector,
translucent white plastic enclosure with decorative trim.
24 white LEDs, One Harvard Engineering LEDENG-165-930 LED board
One L.T.F. DA12W350C1834D010-0014 dimmable LED driver
120.0Vac, 60.00Hz, 0.0902A, 10.41W, 0.962PF, 9.7%THD(i)





Test Report No. LLIA000824-040A

Catalog Number: 3-618-24B Oracle Ceiling Mount
Ceiling mounted, formed steel housing with white enamel steel reflector,
translucent white plastic enclosure with decorative trim.
24 white LEDs, One Harvard Engineering LEDENG-165-930 LED board
One L.T.F. DA12W350C1834D010-0014 dimmable LED driver
120.0Vac, 60.00Hz, 0.0902A, 10.41W, 0.962PF, 9.7%THD(i)

Test Distance 9.5 m
Test Temperature 24.8 °C

Notes

The laboratory has not participated in the selection of samples to be tested. All testing is performed on the understanding that the significance of the report is limited to the extent that the test sample is representative of production units.

Tested in accordance with the applicable sections of publications: IES LM-79-08 (Sec. 12), IES LM-16-93, IES LM-58-13, CIE 13.3:1995, CIE 15:2004, ANSI C78.377:2015, ANSI C82.77-10:2014.

The luminous intensity values, and other derived quantities, contained in this report are based on the absolute data, as measured.

Prorating the performance of the sample for the use of other component combinations (such as lamp / LED / Ballast / driver), or for use in different environmental conditions than that tested, may produce erroneous results.

This report is free of erasures and corrections.

Photometric intensity values are reported using the CIE Gamma coordinate system as defined in CIE publication number 121.

This report may contain data that are not covered by the NVLAP accreditation. Quantities marked with * are not covered.

This report must not be used by the customer to claim product certification, approval or endorsement by NVLAP, NIST, or any agency of the Federal Government.



Report of Test

LLIA000824-040B

Integrating Sphere Report

Catalog Number: 3-618-24B Oracle Ceiling Mount

Ceiling mounted, formed steel housing with white enamel steel reflector,
translucent white plastic enclosure with decorative trim.

24 white LEDs, One Harvard Engineering LEDENG-165-930 LED board

One L.T.F. DA12W350C1834D010-0014 dimmable LED driver



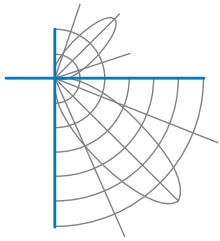
Performance Summary

| | |
|--------------|-----------|
| Voltage | 120.0 Vac |
| Current | 0.0900 A |
| Power | 10.41 W |
| Frequency | 60.00 Hz |
| Power Factor | 0.965 |
| Current THD | 9.8 % |

| | |
|---------------------|------------------|
| Total Luminous Flux | 772.4 lm |
| Efficacy | 74.2 lm/W |
| Chromaticity (x,y) | (0.4357, 0.4041) |
| (u',v') | (0.2498, 0.5212) |
| Duv | 0.0002 |
| CCT | 3021 K |
| CRI (Ra) | 93 |
| R9 | 61 |

Prepared For:
Oxygen Lighting
201 Railhead Road
Fort Worth, TX 76106, USA

Test date: 07/27/2017
Report date: 08/03/2017



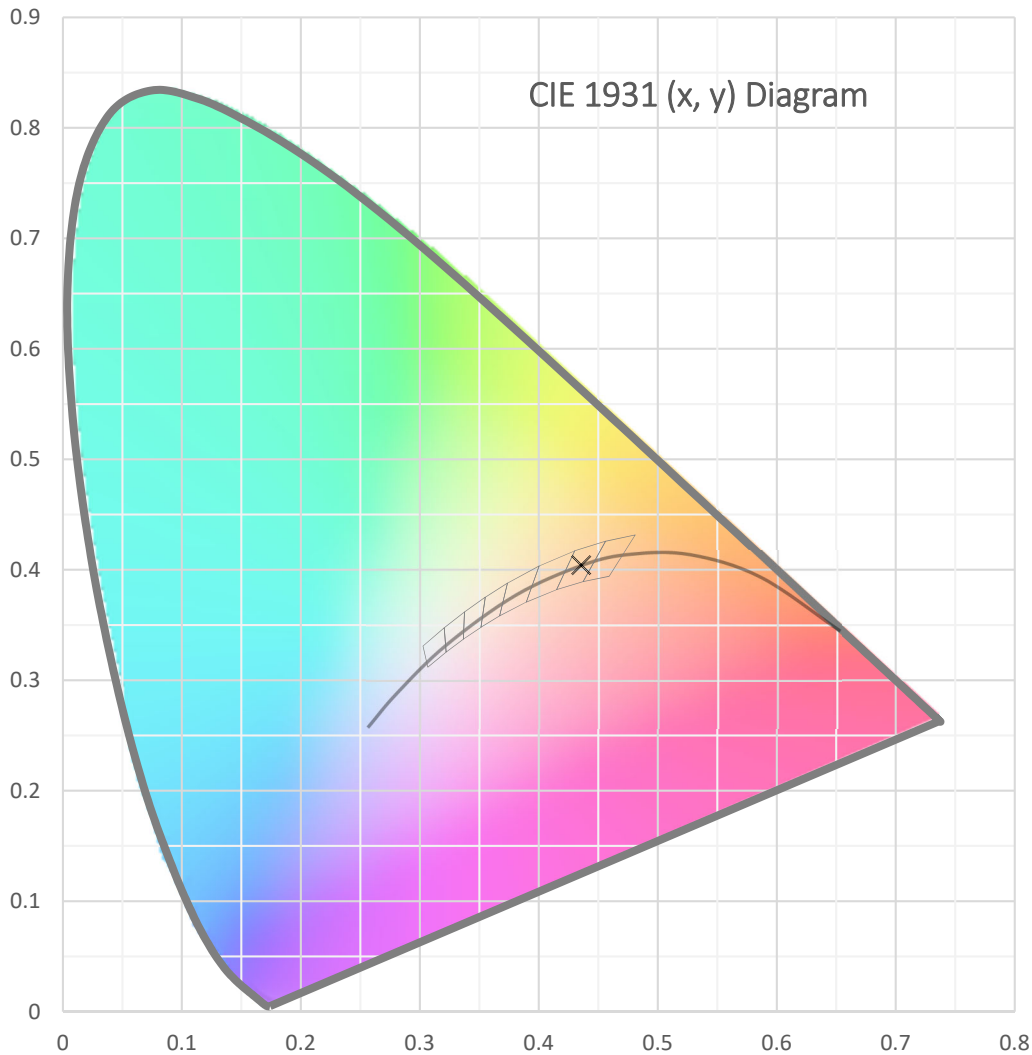
Test Report Number: LLIA000824-040B

Catalog Number: 3-618-24B Oracle Ceiling Mount

Ceiling mounted, formed steel housing with white enamel steel reflector,
translucent white plastic enclosure with decorative trim.

24 white LEDs, One Harvard Engineering LEDENG-165-930 LED board

One L.T.F. DA12W350C1834D010-0014 dimmable LED driver





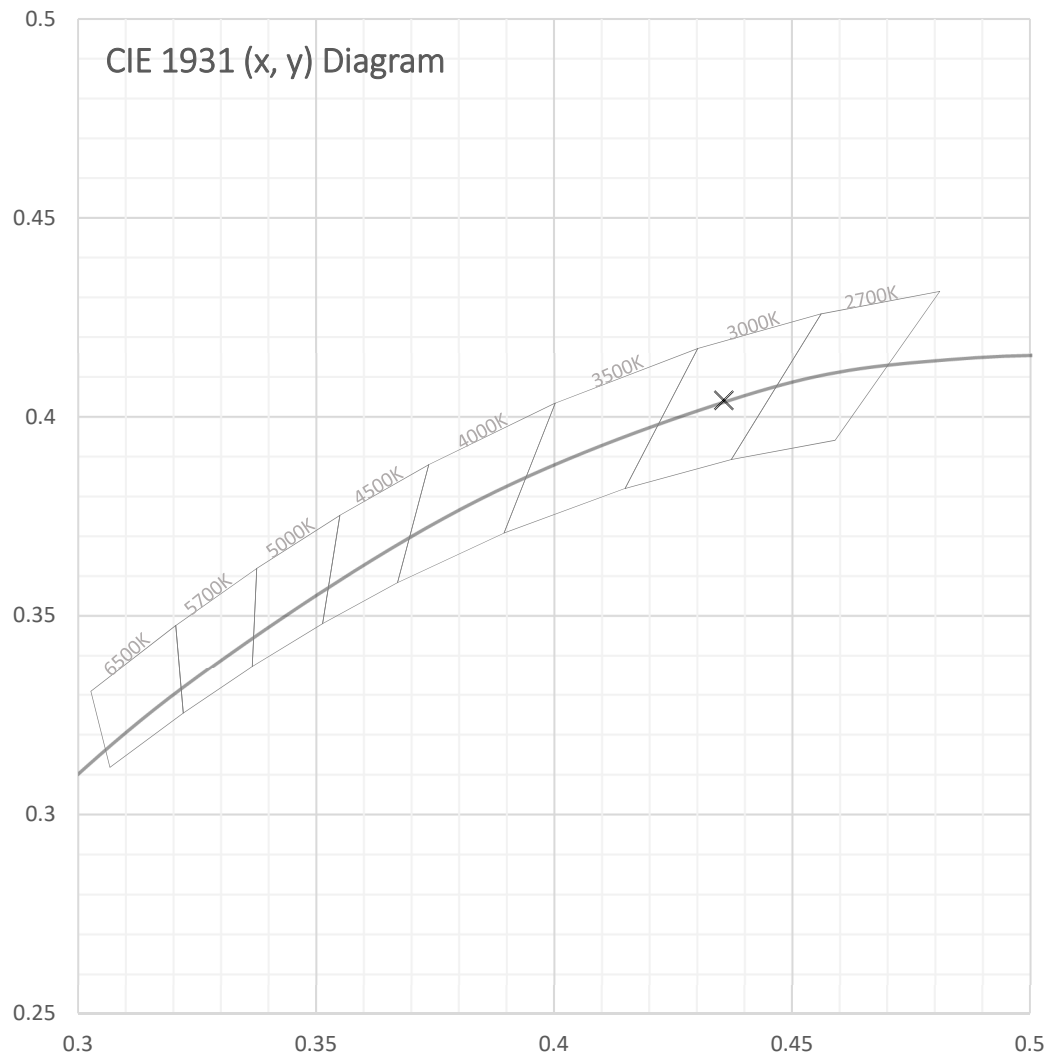
Test Report Number: LLIA000824-040B

Catalog Number: 3-618-24B Oracle Ceiling Mount

Ceiling mounted, formed steel housing with white enamel steel reflector,
translucent white plastic enclosure with decorative trim.

24 white LEDs, One Harvard Engineering LEDENG-165-930 LED board

One L.T.F. DA12W350C1834D010-0014 dimmable LED driver





Test Report Number: LLIA000824-040B

Catalog Number: 3-618-24B Oracle Ceiling Mount

Ceiling mounted, formed steel housing with white enamel steel reflector,
translucent white plastic enclosure with decorative trim.

24 white LEDs, One Harvard Engineering LEDENG-165-930 LED board

One L.T.F. DA12W350C1834D010-0014 dimmable LED driver

Spectral Data

| | |
|-------------------------------------|------------------|
| Total Radiant Flux | 2.703 W |
| Total Luminous Flux | 772.4 Lm |
| Chromaticity CIE 1931 (x, y) | (0.4357, 0.4041) |
| Chromaticity CIE 1976 (u', v') | (0.2498, 0.5212) |
| Correlated Color Temperature (CCT) | 3021 K |
| Color Rendering Index (Ra) | 93 |
| R1 | 93 |
| R2 | 95 |
| R3 | 97 |
| R4 | 93 |
| R5 | 92 |
| R6 | 94 |
| R7 | 93 |
| R8 | 83 |
| R9 | 61 |
| R10 | 88 |
| R11 | 94 |
| R12 | 81 |
| R13 | 93 |
| R14 | 97 |
| Distance from Planckian Locus (Duv) | 0.0002 |
| Scotopic/Photopic Ratio * | 1.410 |

Electrical Data

| | |
|--------------|-----------|
| Voltage | 120.0 Vac |
| Current | 0.0900 A |
| Power | 10.41 W |
| Frequency | 60.00 Hz |
| Power Factor | 0.965 |
| Current THD | 9.8 % |



Test Report Number: LLIA000824-040B

Catalog Number: 3-618-24B Oracle Ceiling Mount

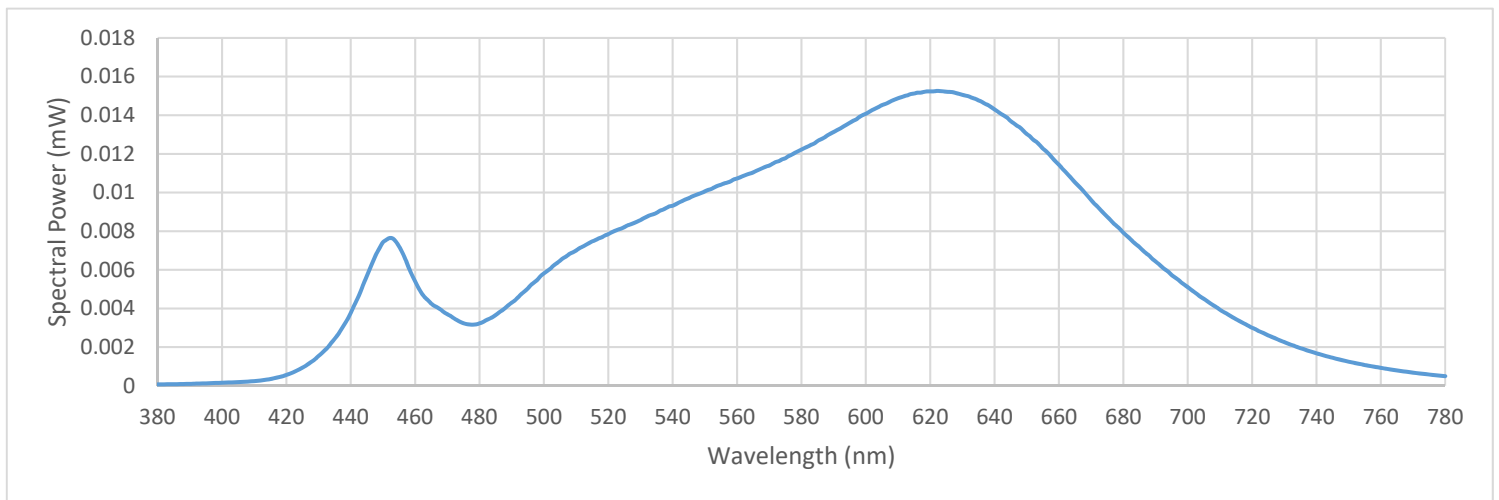
Ceiling mounted, formed steel housing with white enamel steel reflector,
translucent white plastic enclosure with decorative trim.

24 white LEDs, One Harvard Engineering LEDENG-165-930 LED board

One L.T.F. DA12W350C1834D010-0014 dimmable LED driver

Summary Spectral Power Distribution (wavelength - nm, spectral power - mW)

| | | | | | | | |
|-----|----------|-----|----------|-----|----------|-----|----------|
| 380 | 0.000075 | 480 | 0.003230 | 580 | 0.012223 | 680 | 0.007925 |
| 385 | 0.000081 | 485 | 0.003661 | 585 | 0.012666 | 685 | 0.007177 |
| 390 | 0.000100 | 490 | 0.004300 | 590 | 0.013130 | 690 | 0.006436 |
| 395 | 0.000126 | 495 | 0.005039 | 595 | 0.013604 | 695 | 0.005734 |
| 400 | 0.000155 | 500 | 0.005814 | 600 | 0.014074 | 700 | 0.005107 |
| 405 | 0.000191 | 505 | 0.006477 | 605 | 0.014523 | 705 | 0.004499 |
| 410 | 0.000241 | 510 | 0.007001 | 610 | 0.014876 | 710 | 0.003939 |
| 415 | 0.000346 | 515 | 0.007469 | 615 | 0.015120 | 715 | 0.003450 |
| 420 | 0.000564 | 520 | 0.007845 | 620 | 0.015236 | 720 | 0.003003 |
| 425 | 0.000939 | 525 | 0.008213 | 625 | 0.015216 | 725 | 0.002607 |
| 430 | 0.001545 | 530 | 0.008572 | 630 | 0.015055 | 730 | 0.002265 |
| 435 | 0.002434 | 535 | 0.008948 | 635 | 0.014768 | 735 | 0.001947 |
| 440 | 0.003779 | 540 | 0.009317 | 640 | 0.014301 | 740 | 0.001680 |
| 445 | 0.005680 | 545 | 0.009706 | 645 | 0.013698 | 745 | 0.001451 |
| 450 | 0.007423 | 550 | 0.010060 | 650 | 0.013030 | 750 | 0.001248 |
| 455 | 0.007212 | 555 | 0.010403 | 655 | 0.012277 | 755 | 0.001074 |
| 460 | 0.005408 | 560 | 0.010728 | 660 | 0.011439 | 760 | 0.000929 |
| 465 | 0.004254 | 565 | 0.011040 | 665 | 0.010523 | 765 | 0.000795 |
| 470 | 0.003704 | 570 | 0.011398 | 670 | 0.009608 | 770 | 0.000679 |
| 475 | 0.003239 | 575 | 0.011776 | 675 | 0.008748 | 775 | 0.000584 |
| | | | | | | 780 | 0.000500 |





Test Report Number: LLIA000824-040B

Catalog Number: 3-618-24B Oracle Ceiling Mount

Ceiling mounted, formed steel housing with white enamel steel reflector,
translucent white plastic enclosure with decorative trim.

24 white LEDs, One Harvard Engineering LEDENG-165-930 LED board

One L.T.F. DA12W350C1834D010-0014 dimmable LED driver

Test Equipment Configuration: LightLab International Allentown 2m Integrating Sphere
Measurements acquired using a Labsphere CDS 2600 spectroradiometer
Testing was performed using 4 π geometry

Test Temperature: 24.3 °C

Test Procedure: Tested in accordance with the applicable sections of:
LM-79-08, LM-78-07, LM-58-13, ANSI_ANSLG C78.377-2015, ANSI C82-77-10:2014

Significance: The laboratory has not participated in the selection of samples to be tested.
All testing is performed on the understanding that the significance of the report
is limited to the extent that the test sample is representative of production units.

Notes: The measurements and other derived quantities contained in this report
are based on the absolute data as measured.

Prorating the performance of the sample for the use of other component
combinations (such as lamp / LED / Ballast / driver), or for use in different
environmental conditions than that tested, may produce erroneous results.

This report is free of erasures and corrections

This report may contain data that are not covered by the NVLAP accreditation.
Quantities marked with * are not covered.