



Report of Test

LLIA000824-043A

Catalog Number: 3-534-24B Plato Vanity
 Wall mounted, formed steel housing with white enamel steel reflector, translucent white plastic enclosure.
 72 white LEDs, One Harvard Engineering LER7-568x-17-930-72S-I LED board
 One LTF DA12W350C1834D010-0000 dimming LED driver.
 120.0Vac, 60.00Hz, 0.1272A, 14.90W, 0.977PF, 8.7%THD(i)



Performance Summary

Total Light Output	1057 lm
Luminaire Power	14.9 W
Luminous Efficacy	70.9 lm/W

PREPARED FOR : Oxygen Lighting, 201 Railhead Road, Fort Worth, TX 76106, USA



Test Report No. LLIA000824-043A

Catalog Number: 3-534-24B Plato Vanity

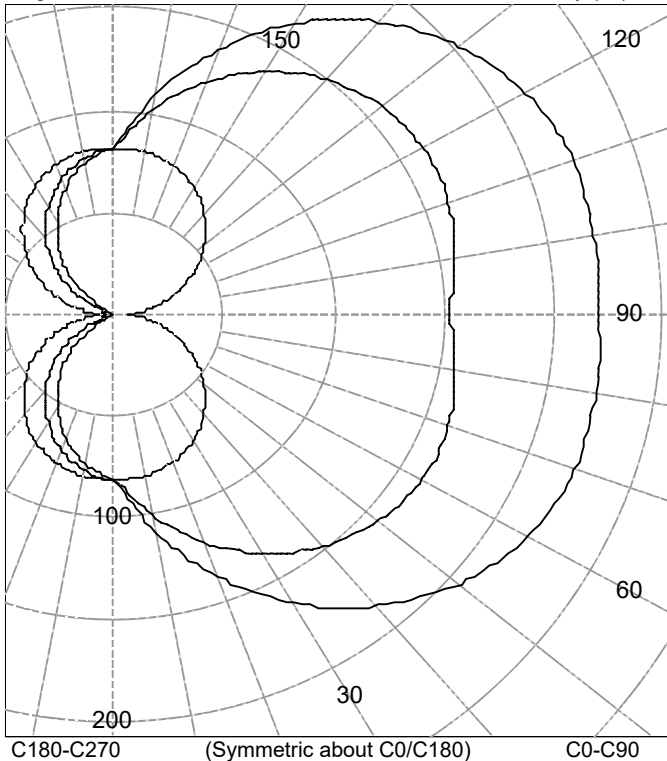
Wall mounted, formed steel housing with white enamel steel reflector, translucent white plastic enclosure.

72 white LEDs, One Harvard Engineering LER7-568x-17-930-72S-I LED board

One LTF DA12W350C1834D010-0000 dimming LED driver.

120.0Vac, 60.00Hz, 0.1272A, 14.90W, 0.977PF, 8.7%THD(i)

Legend: C0/C180-Solid, C45/C225-Dashed, C90/C270-Grey (cd)



C180-C270 (Symmetric about C0/C180) C0-C90

AVERAGE LUMINANCE (cd/m²)

Gamma	C0	C45	C90
45.0	3002	2611	1589
55.0	3289	2822	1518
65.0	3589	3061	1432
75.0	3927	3353	1322
85.0	4421	3794	1153

INTENSITY SUMMARY (cd)

Gamma	C-Plane					Flux (lm)
	C0	C22.5	C45	C67.5	C90	
0.0	82	82	82	82	82	
5.0	94	92	90	84	81	8
10.0	108	106	100	89	81	
15.0	123	119	110	93	79	26
20.0	137	132	119	97	78	
25.0	151	145	128	100	75	43
30.0	164	157	136	103	72	
35.0	176	168	143	105	68	59
40.0	187	177	149	105	64	
45.0	197	186	154	106	59	72
50.0	205	194	158	105	53	
55.0	212	200	160	103	48	79
60.0	218	204	162	101	42	
65.0	221	207	162	98	36	81
70.0	223	208	162	95	29	
75.0	223	208	160	91	23	81
80.0	223	207	157	87	17	
85.0	222	206	155	82	11	79
90.0	220	204	153	79	7	

ZONAL FLUX AND PERCENTAGES

Zone	Flux (lm)	% Lamp	% Luminaire
0-30	77	N / A	7.3
0-40	136	N / A	12.9
0-60	287	N / A	27.2
0-90	528	N / A	49.9
40-90	391	N / A	37.0
60-90	240	N / A	22.8
90-180	529	N / A	50.1
0-180	1057	N / A	100.0

Total Light Output = 1,057 lm

Signed:

Authorized Signatory

Date of test 14-Sep-2017

Date of report 14-Sep-2017



Test Report No. LLIA000824-043A

Catalog Number: 3-534-24B Plato Vanity

Wall mounted, formed steel housing with white enamel steel reflector, translucent white plastic enclosure.

72 white LEDs, One Harvard Engineering LER7-568x-17-930-72S-I LED board

One LTF DA12W350C1834D010-0000 dimming LED driver.

120.0Vac, 60.00Hz, 0.1272A, 14.90W, 0.977PF, 8.7%THD(i)

Intensity data (cd)

Gamma	C-Plane				
	C0	C22.5	C45	C67.5	C90
0.0	82	82	82	82	82
2.5	86	86	85	82	81
5.0	94	92	90	84	81
7.5	101	99	95	86	81
10.0	108	106	100	89	81
12.5	116	113	105	91	80
15.0	123	119	110	93	79
17.5	130	126	115	95	79
20.0	137	132	119	97	78
22.5	144	139	124	99	76
25.0	151	145	128	100	75
27.5	157	151	132	102	73
30.0	164	157	136	103	72
32.5	170	162	139	104	70
35.0	176	168	143	105	68
37.5	182	173	146	105	66
40.0	187	177	149	105	64
42.5	192	182	151	106	61
45.0	197	186	154	106	59
47.5	201	190	156	105	56
50.0	205	194	158	105	53
52.5	209	197	159	104	50
55.0	212	200	160	103	48
57.5	215	202	161	102	45
60.0	218	204	162	101	42
62.5	220	206	162	100	39
65.0	221	207	162	98	36
67.5	222	208	162	97	32
70.0	223	208	162	95	29
72.5	223	208	161	93	26
75.0	223	208	160	91	23
77.5	223	207	158	89	20
80.0	223	207	157	87	17
82.5	223	207	156	84	14
85.0	222	206	155	82	11
87.5	221	205	154	80	9
90.0	220	204	153	79	7



Test Report No. LLIA000824-043A

Catalog Number: 3-534-24B Plato Vanity

Wall mounted, formed steel housing with white enamel steel reflector, translucent white plastic enclosure.

72 white LEDs, One Harvard Engineering LER7-568x-17-930-72S-I LED board

One LTF DA12W350C1834D010-0000 dimming LED driver.

120.0Vac, 60.00Hz, 0.1272A, 14.90W, 0.977PF, 8.7%THD(i)

Intensity data (cd)

Gamma	C-Plane				
	C0	C22.5	C45	C67.5	C90
90.0	220	204	153	79	7
92.5	221	205	153	80	9
95.0	221	205	154	82	11
97.5	222	206	155	84	14
100.0	222	206	156	87	17
102.5	222	207	158	89	20
105.0	222	207	160	91	24
107.5	222	208	161	94	27
110.0	222	208	162	96	30
112.5	221	207	162	97	33
115.0	220	207	163	99	36
117.5	219	206	163	101	39
120.0	217	204	163	102	42
122.5	215	202	162	103	45
125.0	212	200	162	104	48
127.5	209	197	160	105	51
130.0	205	194	159	106	54
132.5	201	191	157	107	56
135.0	197	187	156	107	59
137.5	192	183	153	107	62
140.0	187	178	151	107	64
142.5	182	174	148	107	66
145.0	176	169	145	106	69
147.5	170	164	142	105	71
150.0	164	158	138	104	72
152.5	158	152	134	103	74
155.0	152	147	130	102	76
157.5	145	140	126	100	77
160.0	138	134	121	99	78
162.5	131	128	117	97	79
165.0	124	121	112	95	80
167.5	117	115	107	93	81
170.0	110	108	102	90	81
172.5	102	101	97	88	82
175.0	95	94	91	85	82
177.5	88	87	86	83	82
180.0	82	82	82	82	82



Test Report No. LLIA000824-043A

Catalog Number: 3-534-24B Plato Vanity

Wall mounted, formed steel housing with white enamel steel reflector, translucent white plastic enclosure.

72 white LEDs, One Harvard Engineering LER7-568x-17-930-72S-I LED board

One LTF DA12W350C1834D010-0000 dimming LED driver.

120.0Vac, 60.00Hz, 0.1272A, 14.90W, 0.977PF, 8.7%THD(i)

Intensity data (cd)

Gamma	C-Plane				
	C90	C112.5	C135	C157.5	C180
0.0	82	82	82	82	82
2.5	81	80	82	81	80
5.0	81	80	81	79	79
7.5	81	79	79	78	77
10.0	81	78	78	76	75
12.5	80	77	77	74	73
15.0	79	76	75	72	70
17.5	79	75	73	69	67
20.0	78	73	71	67	65
22.5	76	72	68	64	62
25.0	75	70	66	61	58
27.5	73	68	63	58	55
30.0	72	66	60	55	52
32.5	70	63	58	51	49
35.0	68	61	55	48	45
37.5	66	58	52	44	41
40.0	64	55	48	41	38
42.5	61	52	45	37	34
45.0	59	49	42	34	30
47.5	56	46	38	30	26
50.0	53	43	35	26	22
52.5	50	40	31	22	18
55.0	48	37	27	18	13
57.5	45	33	23	13	9
60.0	42	30	19	9	6
62.5	39	27	15	7	4
65.0	36	23	11	5	2
67.5	32	20	8	3	1
70.0	29	17	6	2	0
72.5	26	13	5	2	0
75.0	23	10	4	2	0
77.5	20	7	4	2	0
80.0	17	6	4	2	0
82.5	14	5	4	2	0
85.0	11	5	4	2	0
87.5	9	5	4	2	0
90.0	7	5	4	2	0



Test Report No. LLIA000824-043A

Catalog Number: 3-534-24B Plato Vanity

Wall mounted, formed steel housing with white enamel steel reflector, translucent white plastic enclosure.

72 white LEDs, One Harvard Engineering LER7-568x-17-930-72S-I LED board

One LTF DA12W350C1834D010-0000 dimming LED driver.

120.0Vac, 60.00Hz, 0.1272A, 14.90W, 0.977PF, 8.7%THD(i)

Intensity data (cd)

Gamma	C-Plane				
	C90	C112.5	C135	C157.5	C180
90.0	7	5	4	2	0
92.5	9	5	4	2	0
95.0	11	5	4	2	1
97.5	14	5	4	2	0
100.0	17	6	4	2	0
102.5	20	7	4	2	0
105.0	24	9	4	2	0
107.5	27	13	5	2	0
110.0	30	17	6	2	0
112.5	33	20	8	3	1
115.0	36	23	11	5	2
117.5	39	27	15	7	4
120.0	42	30	19	9	6
122.5	45	33	23	13	9
125.0	48	37	27	18	13
127.5	51	40	31	22	18
130.0	54	43	34	26	22
132.5	56	46	38	30	27
135.0	59	50	41	34	31
137.5	62	53	45	37	34
140.0	64	55	48	41	38
142.5	66	58	51	45	42
145.0	69	61	54	48	46
147.5	71	63	57	51	49
150.0	72	66	60	55	52
152.5	74	68	63	58	56
155.0	76	70	65	61	59
157.5	77	72	68	64	62
160.0	78	73	70	67	65
162.5	79	75	73	69	68
165.0	80	76	75	72	71
167.5	81	78	76	74	73
170.0	81	79	78	76	76
172.5	82	79	79	78	78
175.0	82	80	81	80	79
177.5	82	81	82	81	81
180.0	82	82	82	82	82



Test Number: LLIA000824-043A

Catalog Number: 3-534-24B Plato Vanity

Wall mounted, formed steel housing with white enamel steel reflector, translucent white plastic enclosure.

72 white LEDs, One Harvard Engineering LER7-568x-17-930-72S-I LED board

One LTF DA12W350C1834D010-0000 dimming LED driver.

120.0Vac, 60.00Hz, 0.1272A, 14.90W, 0.977PF, 8.7%THD(i)

Coefficients Of Utilization - Zonal Cavity Method

Effective Floor Cavity Reflectance 0.20

RC	80				70				50			30			10			0
	70	50	30	10	70	50	30	10	50	30	10	50	30	10	50	30	10	0
0	107	107	107	107	99	99	99	99	83	83	83	69	69	69	56	56	56	50
1	94	88	83	78	86	81	77	72	68	64	61	55	53	50	44	42	40	35
2	84	75	68	61	77	69	62	57	57	52	48	47	43	39	37	34	31	26
3	76	65	56	49	69	60	52	46	49	44	39	40	36	32	31	28	25	21
4	69	57	48	41	63	52	44	38	43	37	32	35	30	26	27	24	21	17
5	63	50	41	34	57	46	38	32	38	32	27	31	26	22	24	21	17	14
6	58	45	36	29	53	41	33	27	34	28	23	28	23	19	22	18	15	12
7	53	40	31	25	49	37	29	23	31	24	20	25	20	16	20	16	13	10
8	49	36	28	22	45	33	26	20	28	22	17	23	18	14	18	14	11	9
9	46	33	25	19	42	30	23	18	25	20	15	21	16	13	17	13	10	8
10	43	30	22	17	39	28	21	16	23	18	14	19	15	11	15	12	9	7

For absolute test reports, CUs are expressed as a percentage of total lumen output. Calculations were based on published IES procedures, and are based on the zonal cavity method. Basic assumptions: 1) Room surfaces are lambertian reflectors. 2) Incident flux on each surface is uniformly distributed. 3) The room is spectrally neutral. When luminaires are not evenly distributed throughout the room, or do not exhibit lateral symmetry, CU values may differ from actual performance.

Circle of Light Plot

Height(ft)	Illuminance at Nadir (fc)	Beam Width (across 50% Nadir Illum)	
		0-180	90-270
6.0	2.3	11.47	7.85
8.0	1.3	15.29	10.46
10.0	0.8	19.12	13.08
12.0	0.6	22.94	15.69
14.0	0.4	26.77	18.31
16.0	0.3	30.59	20.92



Test Report No. LLIA000824-043A

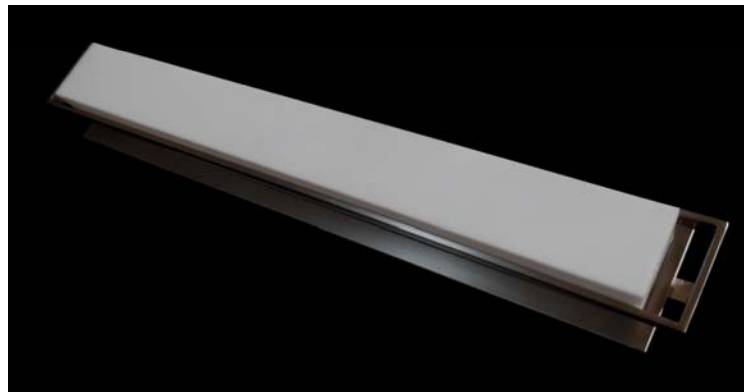
Catalog Number: 3-534-24B Plato Vanity

Wall mounted, formed steel housing with white enamel steel reflector, translucent white plastic enclosure.

72 white LEDs, One Harvard Engineering LER7-568x-17-930-72S-I LED board

One LTF DA12W350C1834D010-0000 dimming LED driver.

120.0Vac, 60.00Hz, 0.1272A, 14.90W, 0.977PF, 8.7%THD(i)





Test Report No. LLIA000824-043A

Catalog Number: 3-534-24B Plato Vanity

Wall mounted, formed steel housing with white enamel steel reflector, translucent white plastic enclosure.

72 white LEDs, One Harvard Engineering LER7-568x-17-930-72S-I LED board

One LTF DA12W350C1834D010-0000 dimming LED driver.

120.0Vac, 60.00Hz, 0.1272A, 14.90W, 0.977PF, 8.7%THD(i)

Test Distance 9.5 m
Test Temperature 25.0 °C

Notes

The laboratory has not participated in the selection of samples to be tested. All testing is performed on the understanding that the significance of the report is limited to the extent that the test sample is representative of production units.

Tested in accordance with the applicable sections of publications: IES LM-79-08 (Sec. 12), IES LM-16-93, IES LM-58-13, CIE 13.3:1995, CIE 15:2004, ANSI C78.377:2015, ANSI C82.77-10:2014.

The luminous intensity values, and other derived quantities, contained in this report are based on the absolute data, as measured.

Prorating the performance of the sample for the use of other component combinations (such as lamp / LED / Ballast / driver), or for use in different environmental conditions than that tested, may produce erroneous results.

This report is free of erasures and corrections.

Photometric intensity values are reported using the CIE Gamma coordinate system as defined in CIE publication number 121.

This report may contain data that are not covered by the NVLAP accreditation. Quantities marked with * are not covered.

This report must not be used by the customer to claim product certification, approval or endorsement by NVLAP, NIST, or any agency of the Federal Government.



Report of Test

LLIA000824-043B

Integrating Sphere Report

Catalog Number: 3-534-24B Plato Vanity

Wall mounted, formed steel housing with white enamel steel reflector, translucent white plastic enclosure.

72 white LEDs, One Harvard Engineering LER7-568x-17-930-72S-I

One LTF DA12W350C1834D010-0000 dimming LED driver.



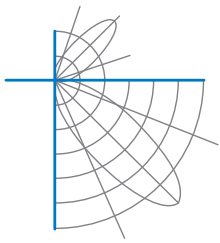
Performance Summary

Voltage	120.0 Vac
Current	0.1271 A
Power	14.88 W
Frequency	60.00 Hz
Power Factor	0.977
Current THD	8.7 %

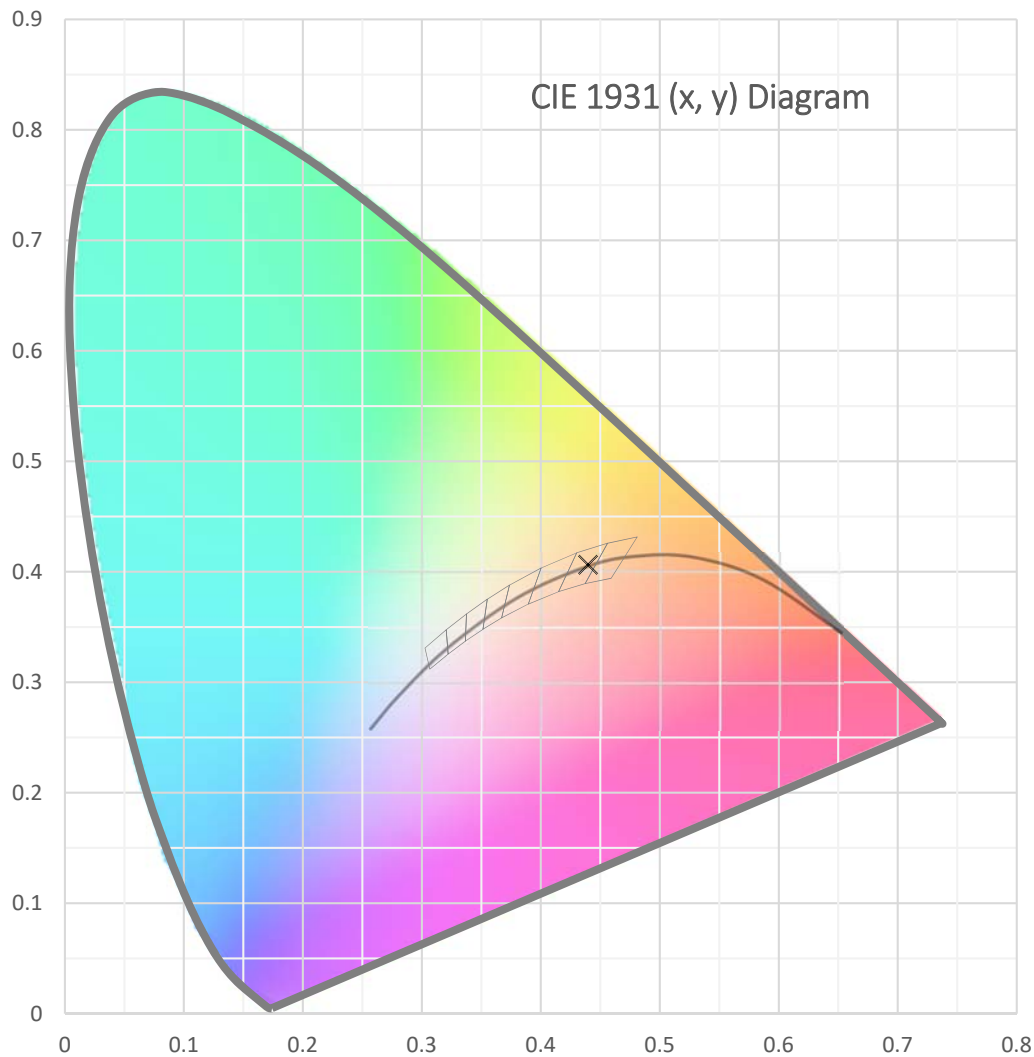
Total Luminous Flux	1064.7 lm
Efficacy	71.6 lm/W
Chromaticity (x,y)	(0.4397, 0.4063)
(u',v')	(0.2514, 0.5227)
Duv	0.0005
CCT	2972 K
CRI (Ra)	92
R9	61

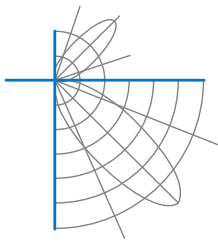
Prepared For:
Oxygen Lighting
201 Railhead Road
Fort Worth, TX 76106, USA

Test date: 09/11/2017
Report date: 09/14/2017

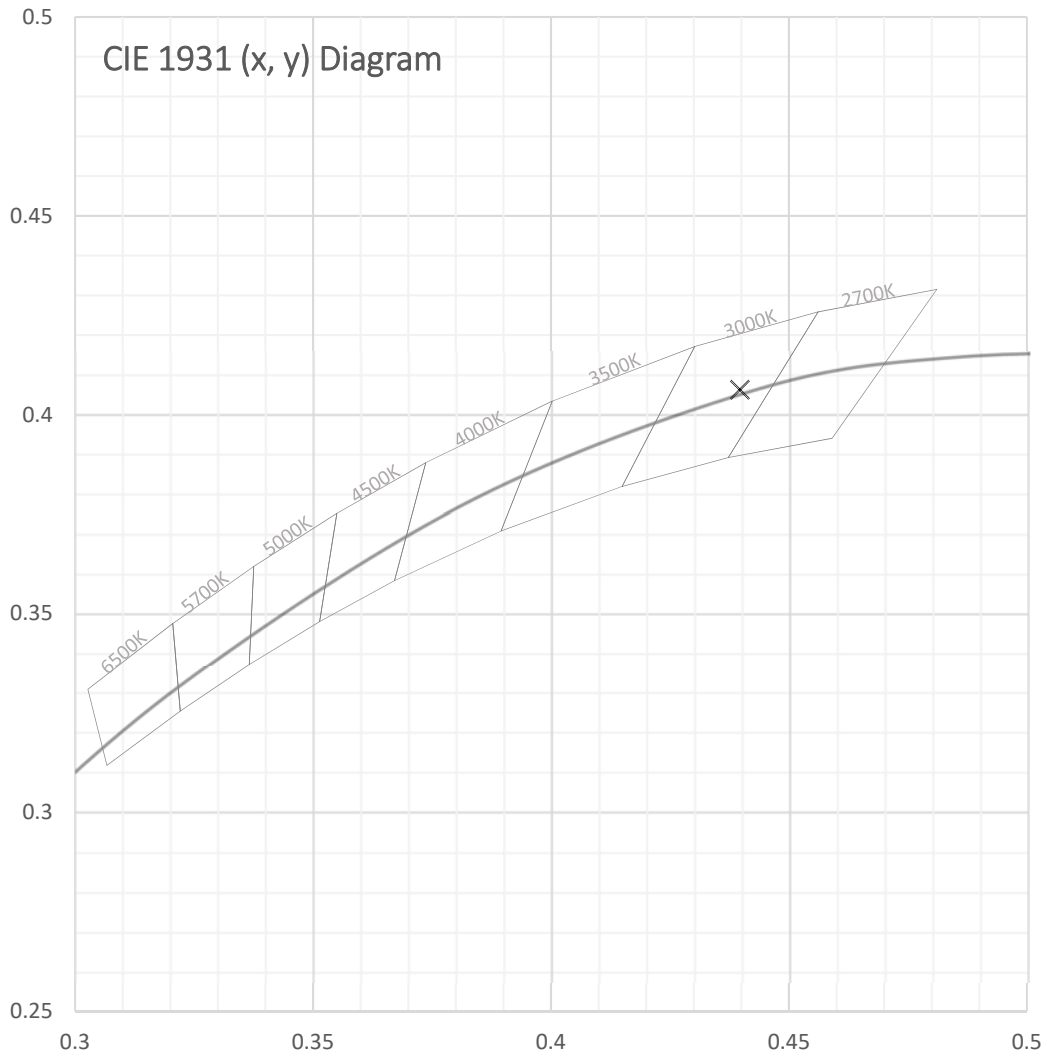


Test Report Number: LLIA000824-043B
Catalog Number: 3-534-24B Plato Vanity
Wall mounted, formed steel housing with white enamel steel reflector, translucent white plastic enclosure.
72 white LEDs, One Harvard Engineering LER7-568x-17-930-72S-I
One LTF DA12W350C1834D010-0000 dimming LED driver.





Test Report Number: LLIA000824-043B
Catalog Number: 3-534-24B Plato Vanity
Wall mounted, formed steel housing with white enamel steel reflector, translucent white plastic enclosure.
72 white LEDs, One Harvard Engineering LER7-568x-17-930-72S-I
One LTF DA12W350C1834D010-0000 dimming LED driver.





Test Report Number: LLIA000824-043B

Catalog Number: 3-534-24B Plato Vanity

Wall mounted, formed steel housing with white enamel steel reflector, translucent white plastic enclosure.

72 white LEDs, One Harvard Engineering LER7-568x-17-930-72S-I

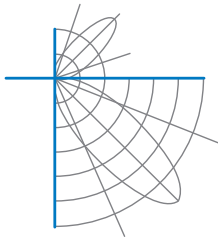
One LTF DA12W350C1834D010-0000 dimming LED driver.

Spectral Data

Total Radiant Flux	3.735 W
Total Luminous Flux	1064.7 Lm
Chromaticity CIE 1931 (x, y)	(0.4397, 0.4063)
Chromaticity CIE 1976 (u', v')	(0.2514, 0.5227)
Correlated Color Temperature (CCT)	2972 K
Color Rendering Index (Ra)	92
R1	92
R2	95
R3	95
R4	93
R5	91
R6	93
R7	93
R8	83
R9	61
R10	86
R11	93
R12	80
R13	93
R14	97
Distance from Planckian Locus (Duv)	0.0005
Scotopic/Photopic Ratio *	1.375

Electrical Data

Voltage	120.0 Vac
Current	0.1271 A
Power	14.88 W
Frequency	60.00 Hz
Power Factor	0.977
Current THD	8.7 %



Test Report Number: LLIA000824-043B

Catalog Number: 3-534-24B Plato Vanity

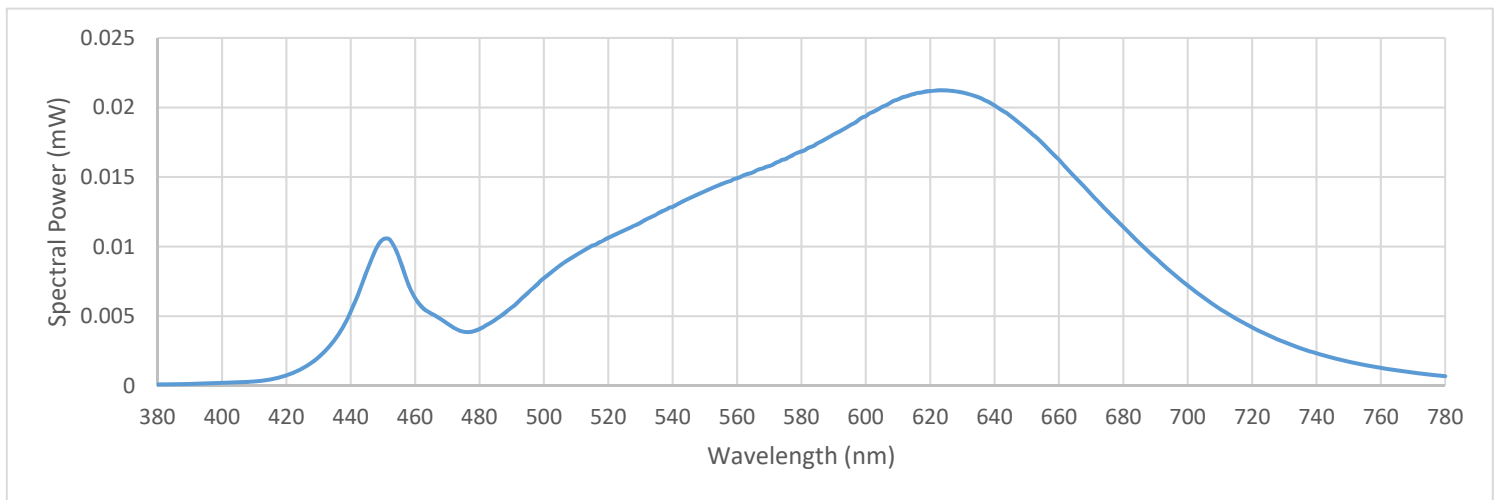
Wall mounted, formed steel housing with white enamel steel reflector, translucent white plastic enclosure.

72 white LEDs, One Harvard Engineering LER7-568x-17-930-72S-I

One LTF DA12W350C1834D010-0000 dimming LED driver.

Summary Spectral Power Distribution (wavelength - nm, spectral power - mW)

380	0.000097	480	0.004084	580	0.016847	680	0.011403
385	0.000105	485	0.004763	585	0.017435	685	0.010278
390	0.000133	490	0.005630	590	0.018062	690	0.009188
395	0.000167	495	0.006671	595	0.018706	695	0.008140
400	0.000208	500	0.007730	600	0.019376	700	0.007212
405	0.000253	505	0.008644	605	0.020042	705	0.006333
410	0.000314	510	0.009382	610	0.020577	710	0.005527
415	0.000451	515	0.010071	615	0.020972	715	0.004835
420	0.000753	520	0.010633	620	0.021184	720	0.004193
425	0.001256	525	0.011161	625	0.021233	725	0.003625
430	0.002067	530	0.011712	630	0.021066	730	0.003144
435	0.003311	535	0.012313	635	0.020739	735	0.002703
440	0.005318	540	0.012855	640	0.020139	740	0.002331
445	0.008253	545	0.013468	645	0.019361	745	0.002015
450	0.010517	550	0.013969	650	0.018423	750	0.001732
455	0.009190	555	0.014480	655	0.017382	755	0.001491
460	0.006303	560	0.014922	660	0.016250	760	0.001289
465	0.005191	565	0.015342	665	0.014997	765	0.001107
470	0.004479	570	0.015796	670	0.013772	770	0.000942
475	0.003878	575	0.016287	675	0.012566	775	0.000809
						780	0.000691





Test Report Number: LLIA000824-043B

Catalog Number: 3-534-24B Plato Vanity

Wall mounted, formed steel housing with white enamel steel reflector, translucent white plastic enclosure.

72 white LEDs, One Harvard Engineering LER7-568x-17-930-72S-I

One LTF DA12W350C1834D010-0000 dimming LED driver.

Test Equipment Configuration: LightLab International Allentown 2m Integrating Sphere
Measurements acquired using a Labsphere CDS 2600 spectroradiometer
Testing was performed using 4 π geometry

Test Temperature: 24.8 °C

Test Procedure: Tested in accordance with the applicable sections of:
LM-79-08, LM-78-07, LM-58-13, ANSI_ANSLG C78.377-2015, ANSI C82-77-10:2014

Significance: The laboratory has not participated in the selection of samples to be tested.
All testing is performed on the understanding that the significance of the report is limited to the extent that the test sample is representative of production units.

Notes: The measurements and other derived quantities contained in this report are based on the absolute data as measured.

Prorating the performance of the sample for the use of other component combinations (such as lamp / LED / Ballast / driver), or for use in different environmental conditions than that tested, may produce erroneous results.

This report is free of erasures and corrections

This report may contain data that are not covered by the NVLAP accreditation.
Quantities marked with * are not covered.