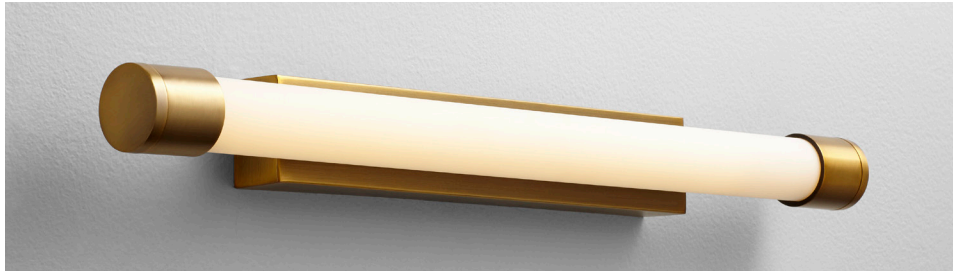


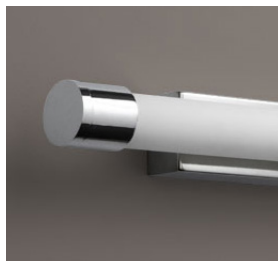
ZENITH II Vanity
3-557-xx

oxygen

FIXTURE TYPE _____ LOCATION _____
PROJECT _____ DATE _____



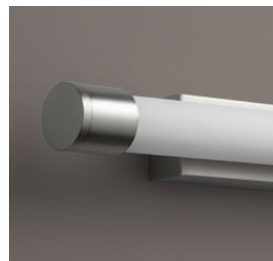
-40 Aged Brass



-14 Polished Chrome



-22 Oiled Bronze



-24 Satin Nickel

LIGHT SOURCE 1 x 11.7W LED, 3000K, CRI 90
LUMINAIRE POWER 14.1W at 120V
RATED LIFE 60000 hr RL
OPTIONAL COLOR TEMPERATURES 2700K, 3500K, 4000K
LUMEN OUTPUT Delivered: 969 lm (LM-79)
INPUT VOLTAGE 120V to 277V AC, 50/60Hz
DRIVER OUTPUT 350mA, 14.7W max power
DIMMING TRIAC and ELV dimming at 120V AC;
 0-10V dimming, 100% to 1% current output
CONSTRUCTION Plated Steel and Acrylic
DIFFUSER - Matte White Acrylic
FINISHES Polished Chrome (-14), Oiled Bronze (-22),
 Satin Nickel (-24), Aged Brass (-40)
MOUNTING 2" x 3" J-Box,
 4" Square J-Box with a single device mud ring
STANDARDS UL Dry/Damp listed, ADA Compliant, CEC Title 24 Compliant,
 Conforms to UL STD 1598, Certified CAN/CSA STD C22.2 No 250.0.



DIMENSIONS

W: 24.25"
H: 2.50"
Ext: 3.25"
M.C: 1.25" From top of fixture

Order example for standard fixture:
3-557-24 (x- Voltage - xxx-Sequence # - xx-Finish)
 3: 120V to 277V

Order example for optional color temperatures: **3-557-2724**
 27: 2700K, 35: 3500K, 40: 4000K

